

THE  
SPECIALIST  
OF  
PU  
POLYURETHANE  
PRODUCTS

*Health*  
*Comfort*  
*Profession*

TEL: 886-4-7810889

FAX: 886-4-7810662

web site: [www.leadsince.com.tw](http://www.leadsince.com.tw)

e-mail: [lead-since@umail.hinet.net](mailto:lead-since@umail.hinet.net)

[leading.since@msa.hinet.net](mailto:leading.since@msa.hinet.net)

**立欣工業股份有限公司**  
**LEAD SINCE INDUSTRY CO., LTD.**



彰化縣鹿港鎮彰濱工業區工業東三路15號  
No.15, Industrial E-3 Rd, Changbin Industrial Park,  
Lugang Township, Changhua County, 50544, Taiwan



LEAD SINCE INDUSTRY CO., LTD.

**立欣工業股份有限公司**



# Index

PU SOLID TIRE	P.01~P.06
PU INFILLED TIRE	P.07
PU ELASTOMER WHEEL	P.07
PU FOAM SEAT & REST	P.08~P.09
PU ARM PAD	P.10
PU MEMORY PILLOW & GEL	P.11



Lightweight and strong micro-cellular Polyurethane solid tire, state of art PU forming technology with advanced PU systems. Our tires are designed for low-speed performance vehicle, uniformly distributed bubble-free tire structure attaining a smooth vehicle ride, longer life of tires, outstanding wear resistance.

Drivers can spell the difference with positive driving experience of our balanced tires.

Self-cleaning effect PU tire sticks less soil than rubber, easy to clean and maintain does not contaminate in-door carpet and floor. Solid tire structure requires no air filling and will not puncture, no more flats, maintenance free. Best solution to Green environment.



Comparison Table of Tire Character / 輪胎特性一覽表

特性	Character	雙密度PU實心胎 Dual-density PU solid tire	單密度PU實心胎 Single-density PU solid tire	PU填充胎 PU foam filled tire
免維修保養	Maintenance free	😊	😊	😊
不破胎	Puncture free	😊	😊	😊
耐磨性	Wear resistance (tread wear)	😊	😊	😊
產品壽命	Product lifetime	😊	😊	😞
續航率	Increased driving range	😊	😊	😞
舒適性	Ride comfort	😊	😞	😞
吸震性	Impact absorption	😊	😞	😞
跳動平衡	Radial balance (up and down)	😊	😊	😞
偏擺平衡	Lateral balance (side-to-side)	😊	😊	😞
動態走行強度	Dynamic rolling strength	😊	😊	😞
輪胎負載	Loading capacity	😊	😊	😞
回復性	Recovery to compression	😊	😞	😞
抓地性	Ground traction	😊	😞	😊
環保材質	Environment-friendly material	😊	😊	😞
交期	Lead-time	😊	😊	😞
品質穩定度	Stability of product quality	😊	😊	😞

Good 😊

Acceptable 😞

Poor 😞

# PU SOLID TIRE



LS-W221 (200x50)

FR:  
Q'TY:20  
N.W.:16  
G.W.:17  
CUFT:1.65

RR:  
Q'TY:20  
N.W.:15.5  
G.W.:16.5  
CUFT:1.65



LS-W222 (260x85)

FR:  
Q'TY:6  
N.W.:12.6  
G.W.:13.6  
CUFT:4

RR:  
Q'TY:6  
N.W.:12.6  
G.W.:13.6  
CUFT:4



LS-W237 (200x50)

FR:  
Q'TY:20  
N.W.:16  
G.W.:17  
CUFT:1.65

RR:  
Q'TY:20  
N.W.:15.5  
G.W.:16.5  
CUFT:1.65



LS-W240 (200x50)

FR:  
Q'TY:20  
N.W.:16  
G.W.:17  
CUFT:1.65

RR:  
Q'TY:20  
N.W.:15.5  
G.W.:16.5  
CUFT:1.65



LS-W241 (200x75)

FR:  
Q'TY:20  
N.W.:20  
G.W.:21  
CUFT:2.1

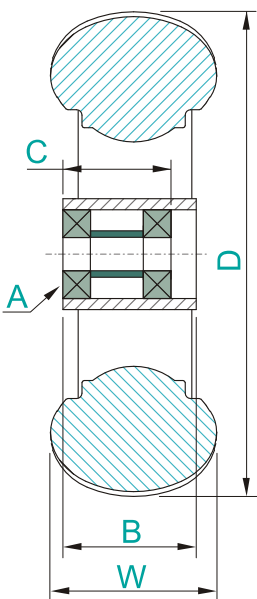
RR:  
Q'TY:20  
N.W.:21  
G.W.:22  
CUFT:2.1



LS-W259 (200x70)

FR:  
Q'TY:16  
N.W.:15  
G.W.:16  
CUFT:1.8

RR:  
Q'TY:16  
N.W.:15.3  
G.W.:16.5  
CUFT:1.8



Rim Model	Item No. ▶			LS-W221	LS-W222	LS-W237	LS-W240	LS-W241	LS-W259
	Specification ▶			200x50	260x85	200x50	200x50	200x75	200x70
	Diameter(D) ▶			φ192	φ262	φ194	φ194	φ194	φ192
	Tire Section Width(W) ▶			W:49	W:85	W:49	W:49	W:73	W:70
	A	B	C	Measurement: mm					
LS-W222-01	6202zz		38.0		▲				
LS-W222-02	φ19x5x38.0				▲				
LS-W240-10	608zz	57.0	57.0	▲		▲	▲		
LS-W240-13	6201zz	48.1	40.0	▲		▲	▲		
LS-W240-15	6201zz	48.1	39.0	▲		▲	▲		
LS-W240-08	6900zz	56.7	56.7	▲		▲	▲		
LS-W240-09	6900zz	54.0	33.2	▲		▲	▲		
LS-W240-04	6002zz	54.1	38.1	▲		▲	▲		
LS-W240-06	6002zz	57.4	57.4	▲		▲	▲		
LS-W240-11	6002zz	47.8	38.1	▲		▲	▲		
LS-W240-18	6002zz	54.1	40.5	▲		▲	▲		
LS-W240-01	φ17x5x40.1	54.7	40.1	▲		▲	▲		
LS-W240-02	φ15x5x29.2	54.6	29.2	▲		▲	▲		
LS-W240-05	φ17x5x38.0	54.7	38.0	▲		▲	▲		
LS-W240-12	φ17x5x38.0	48.4	38.0	▲		▲	▲		
LS-W240-07	φ17x6x43.5	54.7	43.5	▲		▲	▲		
LS-W240-19	φ15x5x38.0	48.4	38.0	▲		▲	▲		
LS-W241-04	608zz	61.6	61.6					▲	▲
LS-W241-03	6900zz	68.5	33.3					▲	▲
LS-W241-02	φ15x5x29.2	68.9	29.2					▲	▲
LS-W241-08	φ15x5x38.0	60.1	38.0					▲	▲
LS-W241-05	φ17x5x38.0	68.9	38.0					▲	▲
LS-W241-01	φ17x6x41.0	69.0	41.0					▲	▲

FR  
RR

PU SOLID TIRE



PU tire only  
Q'TY:126  
N.W.:17.6  
G.W.:18.6  
CUFT:3.5

PU wheel  
Q'TY:45  
N.W.:11.4  
G.W.:12.4  
CUFT:1.7

LS-W243(6x1-1/4")



PU tire only  
Q'TY:70  
N.W.:13  
G.W.:14  
CUFT:3.5

PU wheel  
Q'TY:32  
N.W.:13  
G.W.:14  
CUFT:1.7

LS-W244(8x1-1/4")



FR:  
Q'TY:40  
N.W.:23.2  
G.W.:24.2  
CUFT:2.3

LS-W246(6x2")



FR:  
Q'TY:20  
N.W.:15.2  
G.W.:16.2  
CUFT:1.8

RR:  
Q'TY:20  
N.W.:14.7  
G.W.:15.7  
CUFT:1.8

LS-W247(200x50)



FR:  
Q'TY:10  
N.W.:13  
G.W.:14  
CUFT:1.4

RR:  
Q'TY:10  
N.W.:13  
G.W.:14  
CUFT:1.4

LS-W249(220x65)

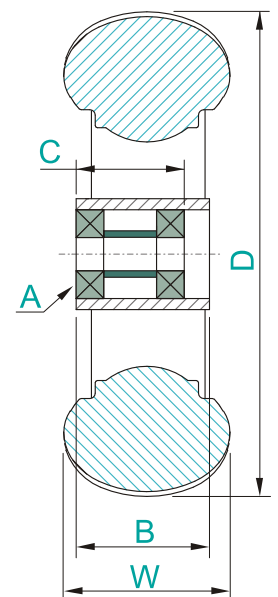


FR:  
Q'TY:10  
N.W.:13  
G.W.:14  
CUFT:1.4

RR:  
Q'TY:10  
N.W.:13  
G.W.:14  
CUFT:1.4

LS-W253(210x65)

Rim Model	Item No.		LS-W243	LS-W244	LS-W246	LS-W247	LS-W249	LS-W253
	Specification		6x1-1/4"	8x1-1/4"	6x2"	200x50	220x65	210x65
	Diameter(D)		φ150	φ200	φ152	φ192	φ220	φ210
	Tire Section Width(W)		W:30	W:30	W:47	W:49	W:64	W:64
			Measurement: mm					
A	B	C						
	608zz	40.0	40.0	▲	▲			
LS-W240-10	608zz	57.0	57.0			▲		
LS-W240-13	6201zz	48.1	40.0			▲		
LS-W240-15	6201zz	48.1	39.0			▲		
LS-W240-08	6900zz	56.7	56.7			▲		
LS-W240-09	6900zz	54.0	33.2			▲		
LS-W240-04	6002zz	54.1	38.1			▲		
LS-W240-06	6002zz	57.4	57.4			▲		
LS-W240-11	6002zz	47.8	38.1			▲		
LS-W240-18	6002zz	54.1	40.5			▲		
LS-W240-01	φ17x5x40.1	54.7	40.1			▲		
LS-W240-02	φ15x5x29.2	54.6	29.2			▲		
LS-W240-05	φ17x5x38.0	54.7	38.0			▲		
LS-W240-12	φ17x5x38.0	48.4	38.0			▲		
LS-W240-07	φ17x6x43.5	54.7	43.5			▲		
LS-W240-19	φ15x5x38.0	48.4	38.0			▲		
LS-W246-01	608zz	60.8	60.8		▲			
LS-W246-02	6901zz	60.8	60.8		▲			
LS-W246-03	6900zz	51.8	28.1		▲			
LS-W249-01	6201zz	70.2	70.2				▲	▲
LS-W249-02	6002zz	70.1	70.1				▲	▲
LS-W249-03	6002zz	69.6	38.1				▲	▲
LS-W249-08	6201zz	69.4	38.0				▲	▲
LS-W249-04	φ17x5.0x38.0	70.1	38.0				▲	▲
LS-W249-06	φ17x4.8x38.5	70.1	38.5				▲	▲
LS-W249-07	φ17x5.0x38.5	70.1	38.5				▲	▲
LS-W249-10	φ17x6.0x35.0	61.0	35.0				▲	▲



FR  
RR

# PU SOLID TIRE



LS-W250(7x1-3/4")

FR:  
Q'TY:40  
N.W.:22  
G.W.:23.5  
CUFT:2.7



LS-W255(6x1-3/4")

FR:  
Q'TY:40  
N.W.:22.5  
G.W.:24  
CUFT:1.8



LS-W256(7x1-3/4")

FR:  
Q'TY:40  
N.W.:28.5  
G.W.:30  
CUFT:2.6

RR:  
Q'TY:40  
N.W.:27.7  
G.W.:28.7  
CUFT:2.6



LS-W258(7"x60")

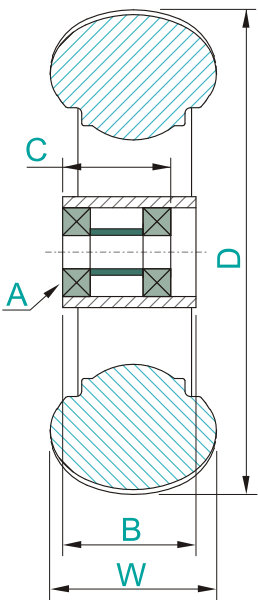
FR:  
Q'TY:20  
N.W.:15.1  
G.W.:16.1  
CUFT:1.7

RR:  
Q'TY:20  
N.W.:14.7  
G.W.:15.7  
CUFT:1.7



LS-W262(7x2")

FR:  
Q'TY:40  
N.W.:21.2  
G.W.:22  
CUFT:2.7



Item No. ▶	Specification							
	LS-W250	LS-W255	LS-W256	LS-W258	LS-W262			
	7x1-3/4"	6x1-3/4"	7x1-3/4"	7"x60"	7x2"			
	φ175	φ154	φ183	φ178				
Tire Section Width(W) ▶	W:42	W:40	W:46	W:60				
	Rim Model	A	B	C	Measurement: mm			
LS-W240-10	608zz	57.0	57.0	▲	▲	▲		
LS-W240-13	6201zz	48.1	40.0	▲	▲	▲		
LS-W240-15	6201zz	48.1	39.0	▲	▲	▲		
LS-W240-08	6900zz	56.7	56.7	▲	▲	▲		
LS-W240-09	6900zz	54.0	33.2	▲	▲	▲		
LS-W240-04	6002zz	54.1	38.1	▲	▲	▲		
LS-W240-06	6002zz	57.4	57.4	▲	▲	▲		
LS-W240-11	6002zz	47.8	38.1	▲	▲	▲		
LS-W240-18	6002zz	54.1	40.5	▲	▲	▲		
LS-W240-01	φ17x5x40.1	54.7	40.1	▲	▲	▲		
LS-W240-02	φ15x5x29.2	54.6	29.2	▲	▲	▲		
LS-W240-05	φ17x5x38.0	54.7	38.0	▲	▲	▲		
LS-W240-12	φ17x5x38.0	48.4	38.0	▲	▲	▲		
LS-W240-07	φ17x6x43.5	54.7	43.5	▲	▲	▲		
LS-W240-19	φ15x5x38.0	48.4	38.0	▲	▲	▲		
FR	LS-W250-03	6000zz	40.0	30.5	▲			▲
RR	LS-W250-04	6000zz	60.0	60.0	▲			▲

PU SOLID TIRE



FR:  
Q'TY:10  
N.W.:21  
G.W.:22.5  
CUFT:1.8

RR:  
Q'TY:10  
N.W.:20.5  
G.W.:22  
CUFT:1.8

LS-W271(228x70)



FR:  
Q'TY:9  
N.W.:18  
G.W.:19  
CUFT:2

RR:  
Q'TY:9  
N.W.:17.5  
G.W.:18.5  
CUFT:2

LS-W260(260x85)



FR:  
Q'TY:9  
N.W.:19  
G.W.:20  
CUFT:2

RR:  
Q'TY:9  
N.W.:18  
G.W.:19  
CUFT:2

LS-W263(260x85)



FR:  
Q'TY:6  
N.W.:21  
G.W.:22.5  
CUFT:2.43

RR:  
Q'TY:6  
N.W.:20.5  
G.W.:22  
CUFT:2.43

LS-W270(285x91)

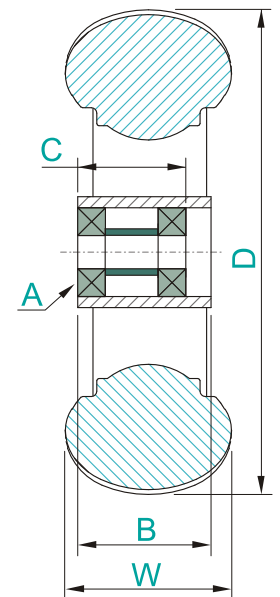


FR:  
Q'TY:6  
N.W.:21.3  
G.W.:22.3  
CUFT:2.4

RR:  
Q'TY:6  
N.W.:20.8  
G.W.:21.8  
CUFT:2.4

LS-W264(320x100)

Rim Model	Item No. ▶			LS-W271	LS-W260	LS-W263	LS-W270	LS-W264
	Specification ▶			228x70	260x85	260x85	285x91	320x100
	Diameter(D) ▶			φ225	φ257	φ257	φ285	φ320
	Tire Section Width(W) ▶			W:68	W:83	W:83	W:91	W:100
	A	B	C	Measurement: mm				
LS-W260-FR01	6202zz		50.8		▲	▲	▲	
LS-W260-FR02	6202zz		58.0		▲	▲	▲	
LS-W260-FR03	6202zz		46.0		▲	▲	▲	
LS-W260-FR04	6202zz		34.2		▲	▲	▲	
LS-W260-FR05	6003zz		30.8		▲	▲	▲	
LS-W260-FR06	6202zz		30.0		▲	▲	▲	
LS-W260-FR07	6003zz		50.0		▲	▲	▲	
LS-W260-FR08	6003zz		50.8		▲	▲	▲	
LS-W260-RR01	φ17x6.0x38.8		38.8		▲	▲	▲	
LS-W260-RR02	φ20x5.0x58.0		58.0		▲	▲	▲	
LS-W260-RR03	φ19x4.8x44.5		44.5		▲	▲	▲	
LS-W260-RR04	φ17x6.0x35.0		35.0		▲	▲	▲	
LS-W260-RR05	φ19.1x4.8x44.5		44.5		▲	▲	▲	
LS-W260-RR06	φ17x6.0x32.1		32.1		▲	▲	▲	
LS-W260-RR07	φ19x4.8x50		50.0		▲	▲	▲	
LS-W264-FR01	6003zz		50.8					▲
LS-W264-FR02	6202zz		38.1					▲
LS-W264-FR03	6202zz		42.5					▲
LS-W264-RR01	φ19.05x4.76x50.8		50.8					▲
LS-W264-RR02	φ17x5.0x38.0		38.0					▲
LS-W264-RR03	φ19x5.0x39.0		39.0					▲
LS-W264-RR04	φ19x4.8x59.3		59.3					▲
LS-W271-FR01	6201zz		38.0	▲				
LS-W271-RR04	φ17x5.0x38.5		38.5	▲				



FR  
RR

# PU SOLID TIRE



LS-W201A(200x50)

Q'TY:40  
N.W.:27.6  
G.W.:28.6  
CUFT:3.5



LS-W206A(195x28)  
LS-W206B(195x28)

LS-W206A  
Q'TY:45  
N.W.:14.4  
G.W.:15.4  
CUFT:2.6

LS-W206B  
Q'TY:60  
N.W.:22  
G.W.:23  
CUFT:3.4



LS-W234(190x27)

Q'TY:32  
N.W.:13  
G.W.:14  
CUFT:1.7



LS-W232  
(24x1")

PU tire only  
Q'TY:50  
N.W.:23  
G.W.:24.5  
CUFT:7.88

PU wheel  
Q'TY:8  
N.W.:16  
G.W.:17  
CUFT:7



LS-W233  
(24x1-3/8")

PU tire only  
Q'TY:30  
N.W.:20  
G.W.:22  
CUFT:6.7

PU wheel  
Q'TY:8  
N.W.:16  
G.W.:17  
CUFT:7



LS-W272  
(24x1")

PU tire only  
Q'TY:50  
N.W.:23  
G.W.:24.5  
CUFT:7.88

PU wheel  
Q'TY:8  
N.W.:16  
G.W.:17  
CUFT:7



LS-W242  
(22x1-3/8")

PU tire only  
Q'TY:30  
N.W.:16.5  
G.W.:18  
CUFT:6.4

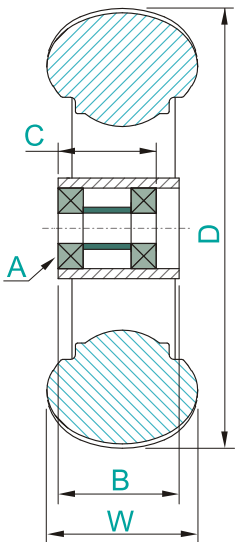
PU wheel  
Q'TY:8  
N.W.:16  
G.W.:17  
CUFT:6



LS-W257  
(20x1-3/8")

PU tire only  
Q'TY:30  
N.W.:17.1  
G.W.:18.6  
CUFT:3.5

PU wheel  
Q'TY:10  
N.W.:14  
G.W.:15  
CUFT:6



Item No.	LS-W201A	LS-W206A	LS-W206B	LS-W234	LS-W232	LS-W233	LS-W242	LS-W257	LS-W272
Specification	200x50	195x28	195x28	190x27	24x1"	24x1-3/8"	22x1-3/8"	20x1-3/8"	24x1"
Diameter(D)	φ194	φ195	φ195	φ191	φ588	φ555	φ515	φ466	φ588
Tire Section Width(W)	W:50	W:27	W:27	W:25	W:20	W:29	W:30	W:29	W:20
Rim Model	A	B	C	Measurement: mm					
	608zz	60	60	▲	▲				
	608zz	40	40			▲			
<b>LS-W234-01</b>	608zz	40	40			▲			
	6001zz				▲	▲	▲	▲	▲
	6201zz				▲	▲	▲	▲	▲
	R8				▲	▲	▲	▲	▲





## PU FOAM INFILLED TIRE

### feature:

Rubber tire foam filled with lightweight PU, sufficient tire traction, smooth air tire like riding, and uniformly molded structure lead to better tire balance than static forming process.

Maintenance free, no air filling, no puncture, no more flats.



2.80/2.50-4

3.00-4  
(C-154)

4.00-5

7x1-3/4

200x50

200x50  
(K-462)

3.00-8  
(C-917)

Specification	Rubber Tire Tread Pattern								
7x1-3/4	C-179	K-301							
200x50	C-179	C-9254	K-301	K-462	K-463	K-909	IA-2889	IA-2802	IA-2614
8x2.50	C-9276								
2.50-4	C-202S								
9x3.50-4	C-203								
2.80/2.50-4	C-178	C-179	C-9277	K-461	K-463				
3.00-4(260x85)	C-154	C-248	K-461	K-463	K-372	IA-2889	IA-2805		
4.00-5(330x100)	C-154	K-461	K-463	IA-2891	IA-2889				
3.50-5	C-264								
4.10/3.50-5	C-154	C-168							
4.10/3.50-6	C-168								
12-1/2x2-1/4	C-628								
14x2.125	C-628								
3.00-8	C-248	C-917	IA-2889						

Elastomer wheel is ideal for durable components in high-wear resistance, good traction and rebound.

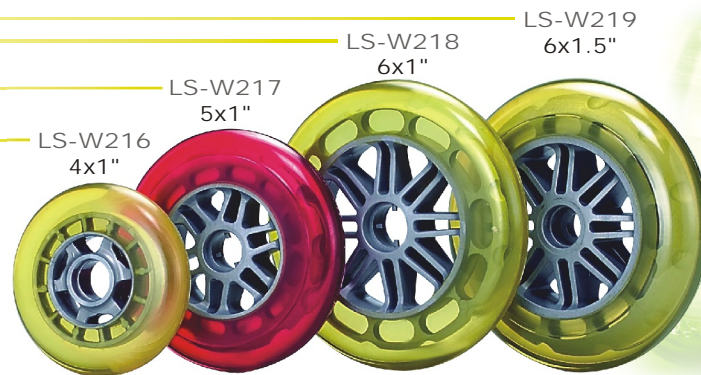
## PU Elastomer Wheel

Q'TY:40  
N.W.:22.2  
G.W.:23.2  
CUFT:1.05

Q'TY:50  
N.W.:18  
G.W.:19  
CUFT:1.3

Q'TY:76  
N.W.:20.5  
G.W.:21.5  
CUFT:1.3

Q'TY:132  
N.W.:21.3  
G.W.:22.3  
CUFT:1.4



Model No.	LS-W215	LS-W216	LS-W216A	LS-W217	LS-W218	LS-W219
Specification	3x1"	4x1"	4x1.25"	5x1"	6x1"	6x1.5"
Diameter	φ76	φ100	φ100	φ127	φ152	φ152
Tire Section Width	W:24	W:24	W:30	W:27	W:27	W:36
Specification	Shaft length	Bearing distance	Measurement: mm			
608zz	24	24	▲	▲	▲	
608zz	27	27		▲		
6000	27	27			▲	
6000	35	35				▲

## PU Foam Seat & Rest



### LS-AE008

PU Molded Foam Seat  
 BASE: Plywood base  
 HEAD: 190x235x110mm  
 SEAT: 480x440x140mm  
 REST: 400x425x140mm



### LS-AE009

PU Molded Foam Seat  
 BASE: Metal frame base  
 HEAD: 190x248x120mm  
 SEAT: 480x490x133mm  
 REST: 470x435x160mm



### LS-AE010

PU Molded Foam Seat  
 BASE: Plywood base  
 HEAD: 60x230x100mm  
 SEAT: 470x460x140mm  
 REST: 430x410x130mm



### LS-AE001

PU Molded Foam Seat & Rest  
 Size: 305x475x70mm/Seat  
 Size: 485x370x104mm/Rest

Seat:	Rest:
Q'TY:10	Q'TY:10
N.W.:15	N.W.:23
G.W.:17	G.W.:24
CUFT:3.7	CUFT:6.2



### LS-AE003

PU Molded Foam Seat & Rest  
 Size: 260x450x73mm/Seat  
 Size: 460x425x104mm/Rest

Seat:	Rest:
Q'TY:10	Q'TY:10
N.W.:10	N.W.:20
G.W.:11	G.W.:21
CUFT:3.5	CUFT:6.3



### LS-AE005

PU Molded Foam Seat & Rest  
 Plywood base  
 Size: 365x410x80mm/Seat  
 Size: 320x185x68mm/Rest

Seat:	Rest:
Q'TY:10	Q'TY:10
N.W.:17.5	N.W.:6.8
G.W.:18.5	G.W.:7.8
CUFT:4.8	CUFT:1.6



### LS-AE013

PU Molded Foam Seat & Rest  
 with T-nuts embedded  
 Size: 260x450x73mm/Seat  
 Size: 485x405x75mm/Rest

Seat:	Rest:
Q'TY:10	Q'TY:10
N.W.:10	N.W.:24
G.W.:11	G.W.:25.5
CUFT:3.5	CUFT:5.3



Rest:  
Q'TY:10  
N.W.:19  
G.W.:20  
CUFT:4.1  
Seat:  
Q'TY:13  
N.W.:17  
G.W.:18  
CUFT:3.5

LS-V601

PU Vacuum Foam Seat & Rest

Vinyl top, plywood base

Size: 290x405x64mm/Seat

Size: 425x365x70mm/Rest



Rest:  
Q'TY:8  
N.W.:17  
G.W.:18  
CUFT:4.5  
Seat:  
Q'TY:10  
N.W.:13.4  
G.W.:14.4  
CUFT:4.5

LS-V602

PU Vacuum Foam Seat & Rest

Vinyl top, plywood base

Size: 280x395x64mm/Seat

Size: 485x385x83mm/Rest



Rest:  
Q'TY:10  
N.W.:19  
G.W.:20  
CUFT:4.6  
Seat:  
Q'TY:10  
N.W.:12.5  
G.W.:13.5  
CUFT:3.4

LS-AF002

PU Molded Foam Seat & Rest

Vinyl top, plywood base

Size: 310x420x60mm/Seat

Size: 495x405x65mm/Rest



LS-623

PU Self-Skinning Seat & Rest

Plywood base

Size: 310x423x70mm/Seat

Size: 456x407x69mm/Rest

Rest:	Seat:
Q'TY:8	Q'TY:10
N.W.:17.6	N.W.:14
G.W.:19.1	G.W.:15
CUFT:5.26	CUFT:4.25



Q'TY:4  
N.W.:20  
G.W.:21  
CUFT:6.2

LS-R01

PU Self-Skinning Foam Seat

Steel frame base with welding nuts

Size: 490x480x385mm(T=60mm)



Q'TY:4  
N.W.:13.2  
G.W.:14.2  
CUFT:4.4

LS-R02

PU Self-Skinning Foam Seat

Steel frame base with welding nuts

Size: 400x410x190mm(T=72mm)



LS-V10

Exercise Bike Seat

Metal base

Size: 330x320x68mm

Q'TY:15  
N.W.:19.5  
G.W.:20.5  
CUFT:3.5



LS-B40

Exercise Bike Seat

Metal base

Size: 257x320x55mm

Q'TY:20  
N.W.:18.4  
G.W.:19.4  
CUFT:3.2

PU Arm Pad



Q'TY:50  
N.W.:14  
G.W.:15  
CUFT:1.3

**LS-AP01** Metal base  
Size:375 x 53 x 30mm  
(Hole Distance 200mm)



Q'TY:50  
N.W.:14  
G.W.:15  
CUFT:1.1

**LS-AP02** Metal base  
Size:370 x 53 x 50mm  
(Hole Distance 297mm)



Q'TY:50  
N.W.:12  
G.W.:13  
CUFT:1.3

**LS-AP03** Metal base  
Size:320 x 49 x 28mm  
(Hole Distance 171mm)



Q'TY:50  
N.W.:12  
G.W.:13  
CUFT:1.3

**LS-AP04** Metal base  
Size:320 x 49 x 28mm  
(Hole Distance 171mm)



Q'TY:50  
N.W.:14.5  
G.W.:15.5  
CUFT:1

**LS-AP05** Metal base  
Size:301 x 53 x 30mm  
(Hole Distance 202.5mm)



Q'TY:50  
N.W.:15.6  
G.W.:16.6  
CUFT:1.1

**LS-AP06** Metal base  
Size:325 x 56 x 30mm  
(Hole Distance 227mm)



Q'TY:60  
N.W.:11.4  
G.W.:12.4  
CUFT:1.1

**LS-AP07** Metal base  
Size:250 x 56 x 30mm  
(Hole Distance 84mm)

**LS-AP10**  
Size:290 x 70 x 56mm  
(Fit 1" Square Tube)

Q'TY:65  
N.W.:11.3  
G.W.:12.3  
CUFT:3.3



**LS-AP12**  
Size:210 x 190 x 75mm

Q'TY:40  
N.W.:17  
G.W.:18  
CUFT:2.8



**LS-AP13**  
Size:180 x 160 x 75mm

Q'TY:40  
N.W.:13.5  
G.W.:14.5  
CUFT:2.1

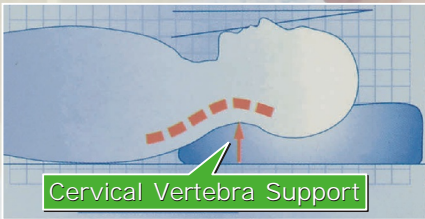


**LS-AP11**  
Size:375 x 70 x 56mm  
(Fit 1" Square Tube)

Q'TY:50  
N.W.:11.4  
G.W.:12.4  
CUFT:3.3

# PU Molded Memory Pillow

Unique extended streamline of human neck contour to back spine design, temperature-sensitive foam reacts to body heat and molds to the most comfortable curve and total relaxation. Evenly molded foam density providing equally supports to improve sleep quality.



LS-PP01  
390x280x80mm

Q'TY:15  
N.W.:10.7  
G.W.:11.7  
CUFT:3.5



LS-PP02  
500x320x105mm

Q'TY:6  
N.W.:8.4  
G.W.:9.4  
CUFT:3.5



LS-PP04  
605x320x125mm

Q'TY:4  
N.W.:7.9  
G.W.:8.9  
CUFT:3.5



LS-PP05  
600x345x110mm

Q'TY:4  
N.W.:8.9  
G.W.:9.9  
CUFT:3.2



## Viscoelastic Temperature Sensitive Memory Foam

Viscoelastic temperature sensitive memory foam with slow rebound property offers optimum pressure distribution under load, thereby producing maximum comfort in seating and bedding.

## Gel

Jelly-like material provides intact support and the least body pressure generated, shock absorption, inactive to temperature changes.



LS-V605  
Gel comfort Seat  
Size: 430x450x42mm

Q'TY:10  
N.W.:21  
G.W.:22  
CUFT:3.1

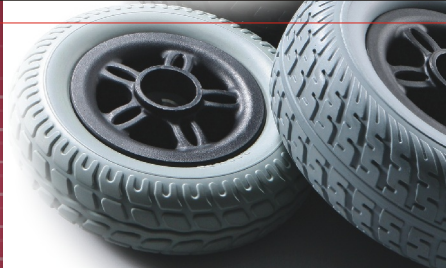
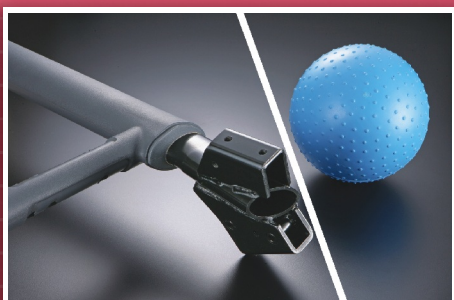


LS-V606  
Gel comfort Seat  
Size: 350x400x35mm

Q'TY:10  
N.W.:15  
G.W.:16  
CUFT:1.9

Leading PU Polyurethane  
products manufacturer

LIHOSIN<sup>®</sup>



PU SOLID TIRE

PU INFILLED TIRE

PU ELASTOMER WHEEL

PU ARM PAD

PU FOAM SEAT & REST

PU MEMORY PILLOW & GEL

**OEM & ODM Welcome**

Harmony / Honesty / Outstanding / Innovation

# Introduction / Philosophy

Harmony · Honesty · Outstanding · Innovation

**LIH SIN** was established in the 1982, a professional PU polyurethane foam manufacturer, design-orientated operates with innovative PU forming technology. Decades of experience leading our company to continuously improving our products.

**LIH SIN** is an ISO 9001 qualified company a well established quality control system running in-house from fault prevention to problem solving, immediate correction and continuous improvement for sustainability. Our goal is to achieve and maintain the highest standard of products and services ensuring ultimate customer satisfactions.

We continuously integrate quality, service, health, safety and environmental protection in management and continuous improvement to make greener products, which we believe would lead to less pollution to the environment. The company is equipped with the sewage and air process facilities with qualified certificates to keep our environment clean and pollution free.

**LIH SIN** provides all the support that our customers need, we continuously customizing our extensive range of Polyurethane systems from Gel, Elastomers, Memory Foams, Flexible Foams, Integral Skin Foams, Rigid Foams, etc.. to provide customized product design solutions for innovative ideas in view and need of our customers.

## Harmony

Endeavored in sustainable development to create prosperous and harmonic business and working environments for our employees, customers, suppliers.

## Honesty

Trustworthy working attitude, open communication, always seeks truth from facts to gain trust and credibility.

## Outstanding

Assure exclusive quality management regularly upgraded and executed to training program. From production to QC departments well acknowledge and implement quality assurance.

## Innovation

Continuous R&D discovers new opportunity and technology to capture latest market trend. Carrying environmental and social responsibility, carefully chosen material and process work to comply **Green Policy** to protect and treasure our earth.

## Core Competences

- ▶ Professional and innovative forming technology.
- ▶ Efficient and penetrative R&D capability.
- ▶ Advanced and environmental friendly PU material developments.
- ▶ Professional manufacturing capability.
- ▶ Quality products and services.

立欣工業股份有限公司

LEAD SINCE INDUSTRY CO., LTD.



和諧 · 誠信 · 卓越 · 創新